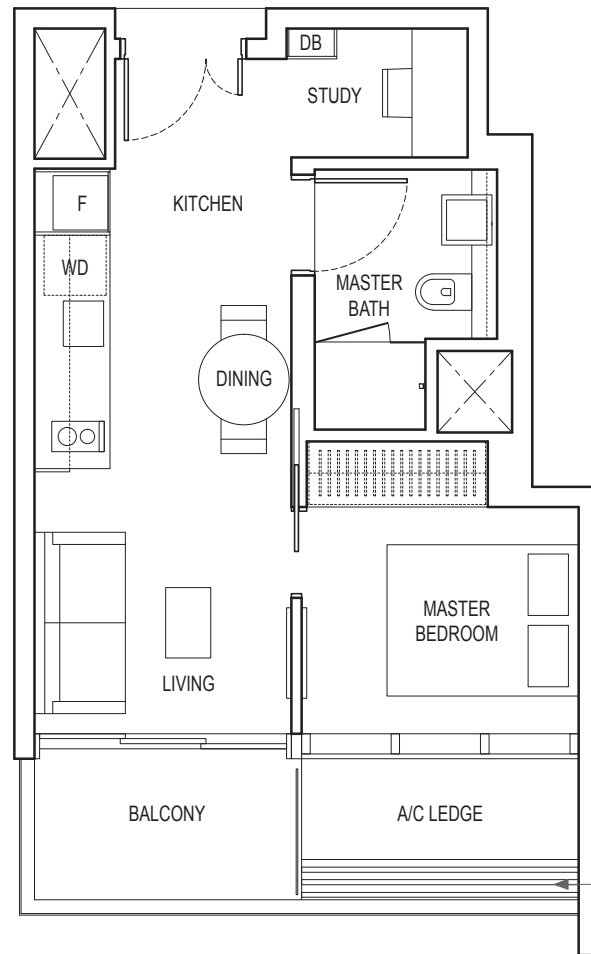


# 1-BEDROOM + STUDY

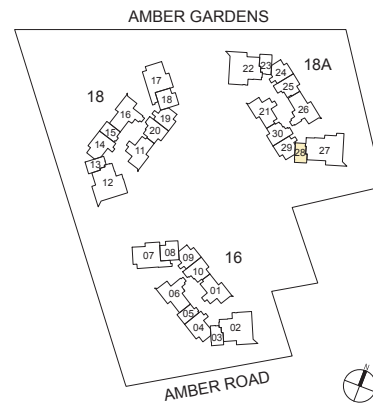
TYPE A1

43 sq m / 463 sq ft

BLK 18A : #02-28 to #19-28



LIGHTWEIGHT ALUMINIUM TRELLIS FOR MAINTENANCE ACCESS ONLY (NOT INCLUDED IN STRATA AREA)



KEYPLAN IS NOT DRAWN TO SCALE



Area includes air-con (A/C) ledge, balcony and strata void area where applicable. Please refer to the key plan for orientation. The plans are subject to change as may be approved by relevant authorities. All floor plans are approximate measurements only and are subject to government re-survey. The balcony shall not be enclosed unless with the approved balcony screen.

DB: Distribution Box SC: Shoe Cabinet ST: Storage WIW: Walk-in-Wardrobe / Closet WD: Integrated Washer Dryer  
 W&D: Washer and Dryer F: Fridge WC: Water Closet PES: Private Enclosed Space

# 1-BEDROOM + ENSUITE STUDY

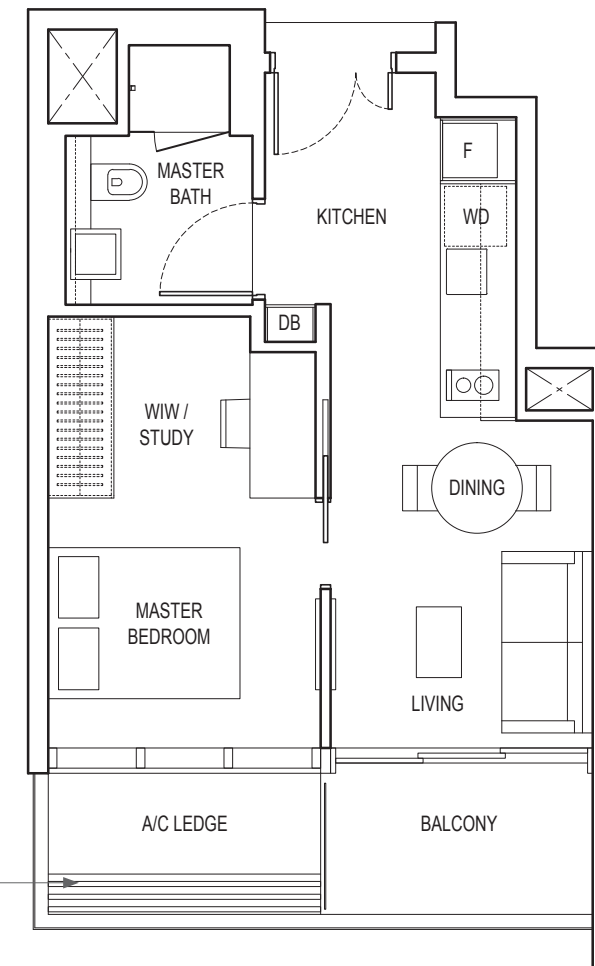
TYPE A3

45 sq m / 484 sq ft

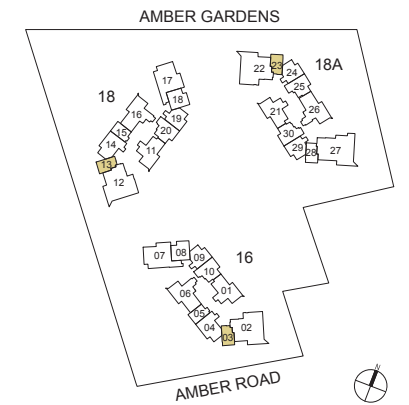
BLK 16 : #02-03 to #19-03

BLK 18 : #02-13 to #19-13

BLK 18A : #02-23 to #19-23



LIGHTWEIGHT ALUMINIUM TRELLIS FOR MAINTENANCE ACCESS ONLY (NOT INCLUDED IN STRATA AREA)



KEYPLAN IS NOT DRAWN TO SCALE



Area includes air-con (A/C) ledge, balcony and strata void area where applicable. Please refer to the key plan for orientation. The plans are subject to change as may be approved by relevant authorities. All floor plans are approximate measurements only and are subject to government re-survey. The balcony shall not be enclosed unless with the approved balcony screen.

DB: Distribution Box SC: Shoe Cabinet ST: Storage WIW: Walk-in-Wardrobe / Closet WD: Integrated Washer Dryer  
 W&D: Washer and Dryer F: Fridge WC: Water Closet PES: Private Enclosed Space

## 2-BEDROOM

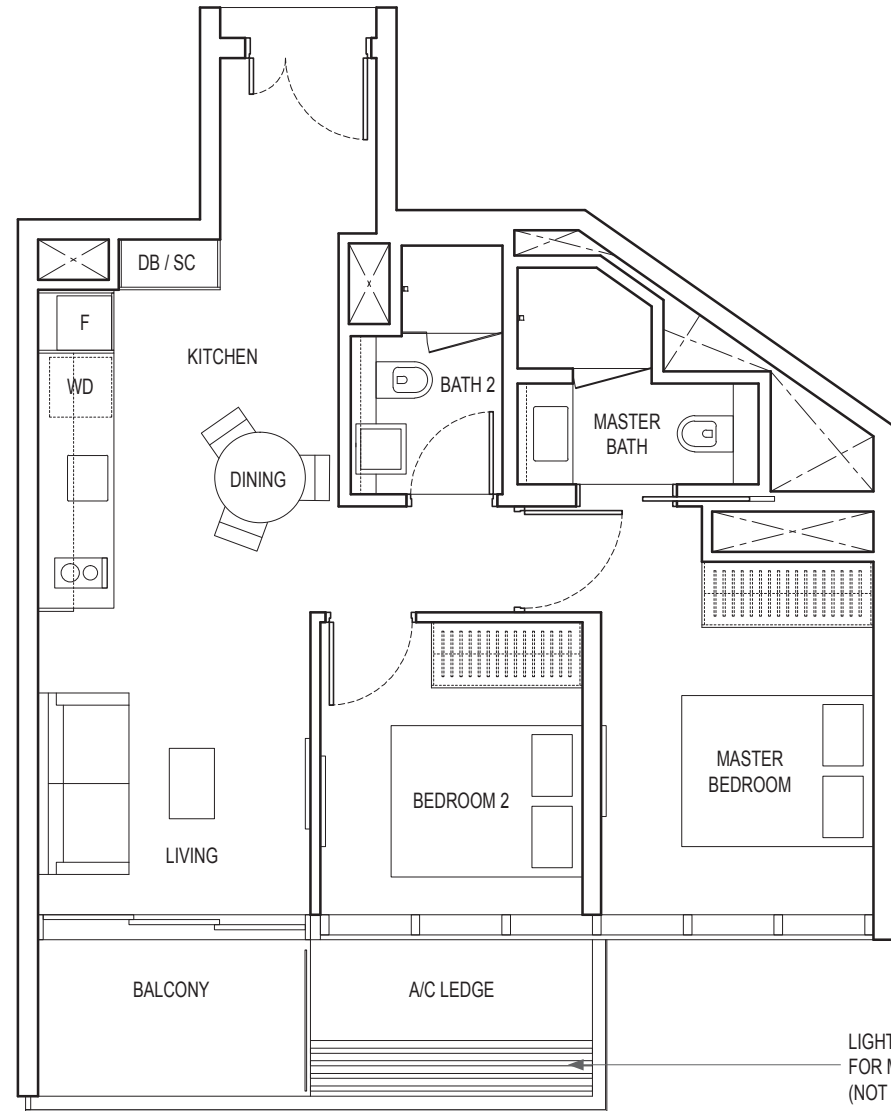
TYPE B1

65 sq m / 700 sq ft

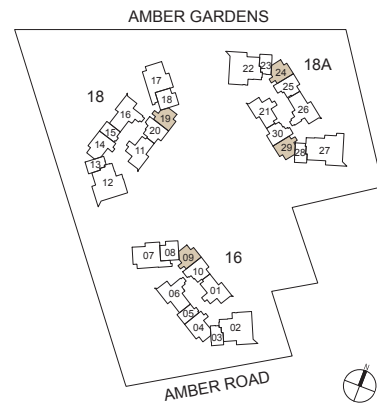
BLK 16 : #02-09 to #21-09

BLK 18 : #02-19 to #21-19

BLK 18A : #03-24 to #21-24, #02-29 to #21-29



LIGHTWEIGHT ALUMINIUM TRELLIS FOR MAINTENANCE ACCESS ONLY (NOT INCLUDED IN STRATA AREA)



KEYPLAN IS NOT DRAWN TO SCALE

0 1m 2m 5m

Area includes air-con (A/C) ledge, balcony and strata void area where applicable. Please refer to the key plan for orientation. The plans are subject to change as may be approved by relevant authorities. All floor plans are approximate measurements only and are subject to government re-survey. The balcony shall not be enclosed unless with the approved balcony screen.

DB: Distribution Box SC: Shoe Cabinet ST: Storage WIW: Walk-in-Wardrobe / Closet WD: Integrated Washer Dryer  
W&D: Washer and Dryer F: Fridge WC: Water Closet PES: Private Enclosed Space

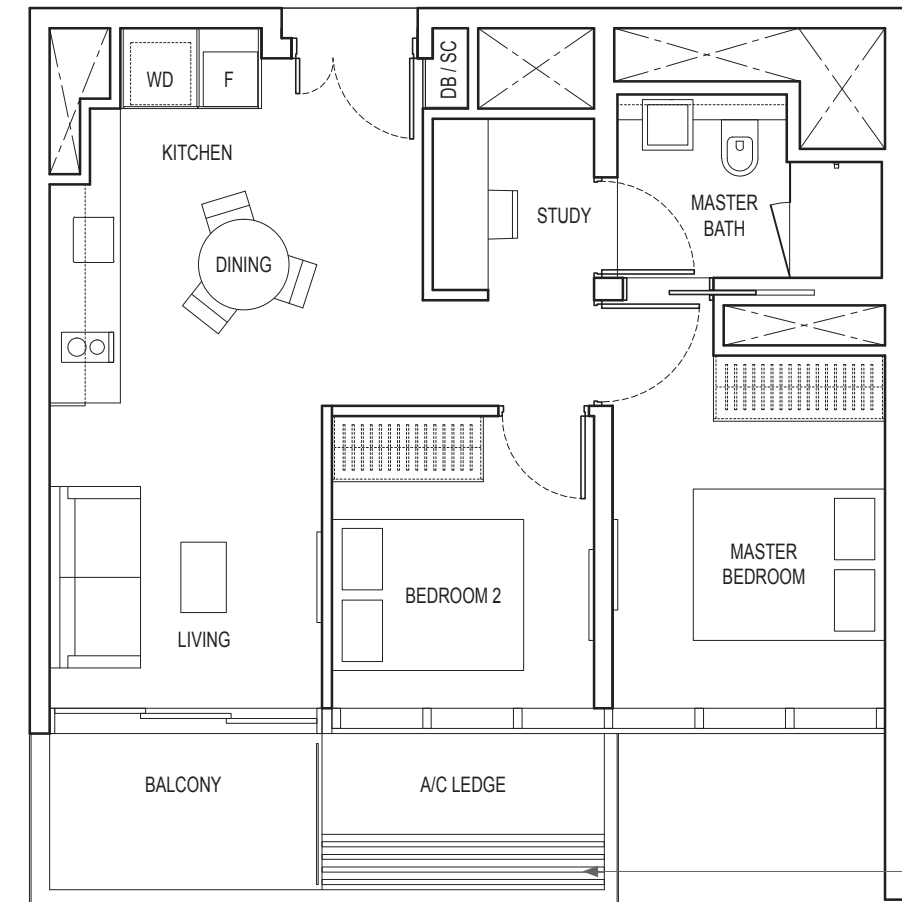
## 2-BEDROOM + STUDY

TYPE B2

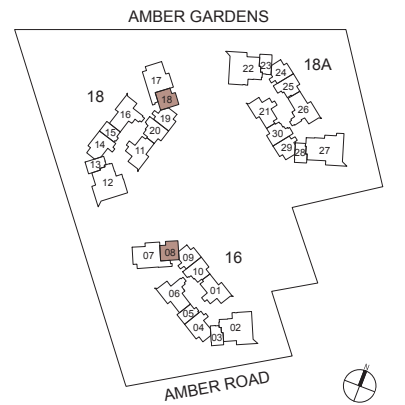
63 sq m / 678 sq ft

BLK 16 : #03-08 to #21-08

BLK 18 : #03-18 to #21-18



LIGHTWEIGHT ALUMINIUM TRELLIS FOR MAINTENANCE ACCESS ONLY (NOT INCLUDED IN STRATA AREA)



KEYPLAN IS NOT DRAWN TO SCALE

0 1m 2m 5m

Area includes air-con (A/C) ledge, balcony and strata void area where applicable. Please refer to the key plan for orientation. The plans are subject to change as may be approved by relevant authorities. All floor plans are approximate measurements only and are subject to government re-survey. The balcony shall not be enclosed unless with the approved balcony screen.

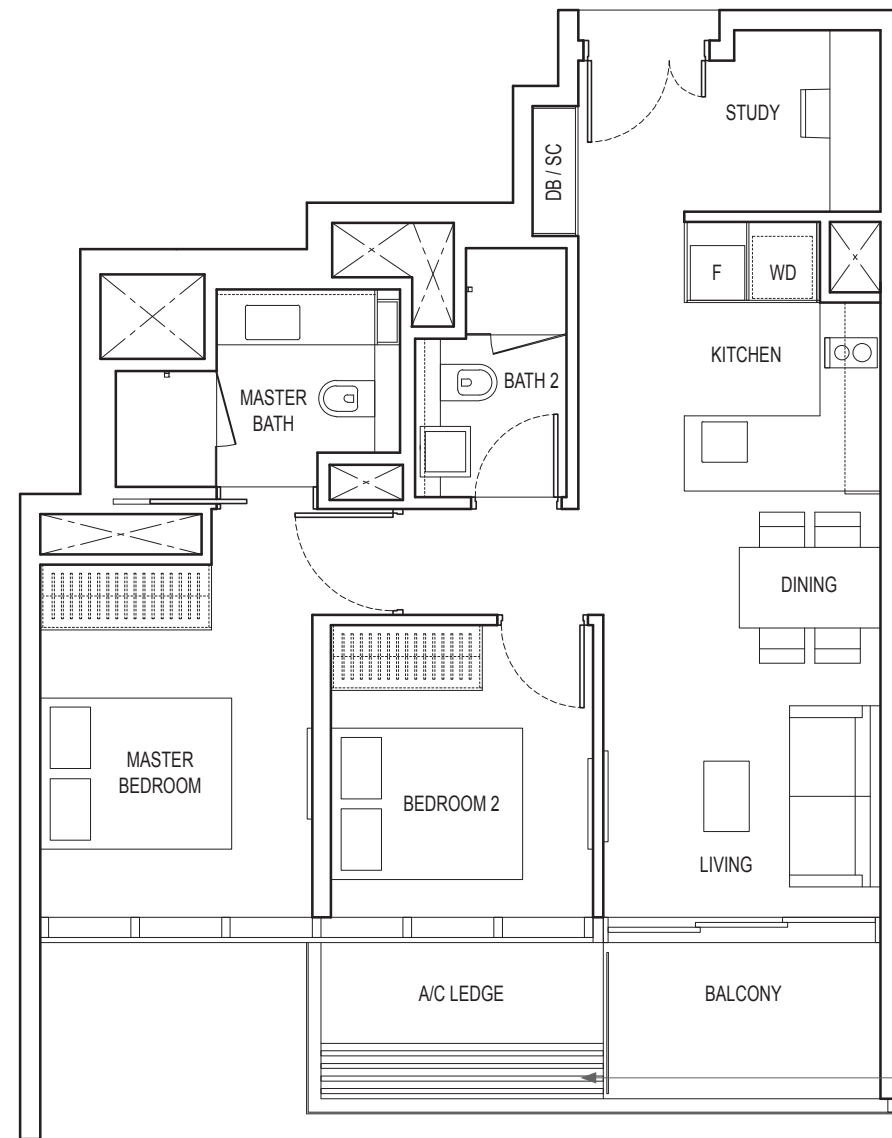
DB: Distribution Box SC: Shoe Cabinet ST: Storage WIW: Walk-in-Wardrobe / Closet WD: Integrated Washer Dryer  
W&D: Washer and Dryer F: Fridge WC: Water Closet PES: Private Enclosed Space

## 2-BEDROOM + STUDY

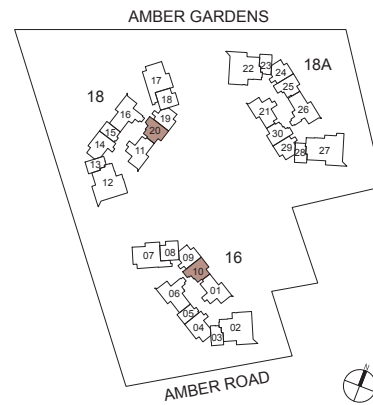
TYPE B4B

69 sq m / 743 sq ft

BLK 16 : #02-10 to #21-10  
BLK 18 : #02-20 to #21-20



LIGHTWEIGHT ALUMINIUM TRELLIS FOR MAINTENANCE ACCESS ONLY (NOT INCLUDED IN STRATA AREA)



KEYPLAN IS NOT DRAWN TO SCALE

0 1m 2m 5m

Area includes air-con (A/C) ledge, balcony and strata void area where applicable. Please refer to the key plan for orientation. The plans are subject to change as may be approved by relevant authorities. All floor plans are approximate measurements only and are subject to government re-survey. The balcony shall not be enclosed unless with the approved balcony screen.

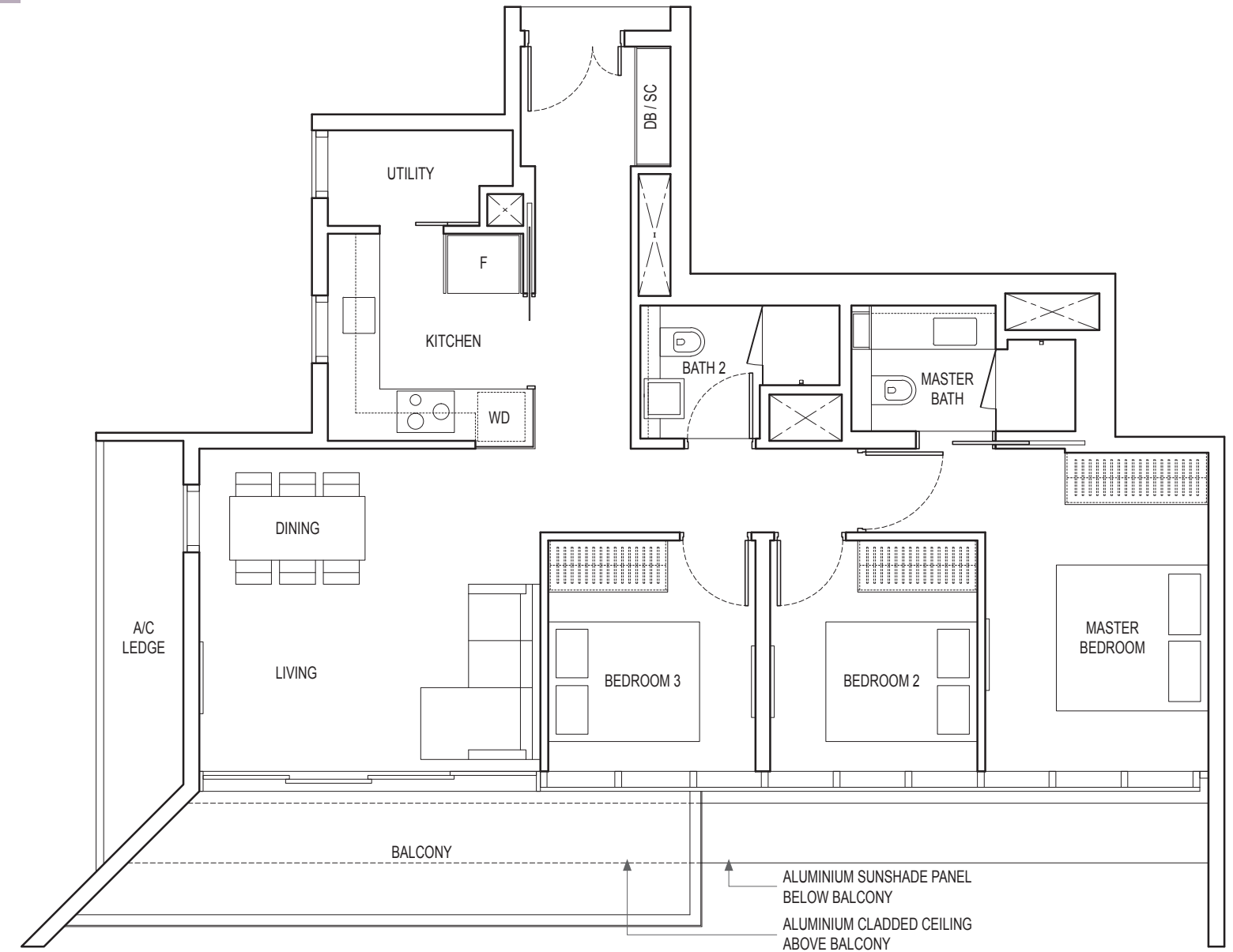
DB: Distribution Box SC: Shoe Cabinet ST: Storage WIW: Walk-in-Wardrobe / Closet WD: Integrated Washer Dryer  
W&D: Washer and Dryer F: Fridge WC: Water Closet PES: Private Enclosed Space

## 3-BEDROOM

TYPE C2A

103 sq m / 1109 sq ft

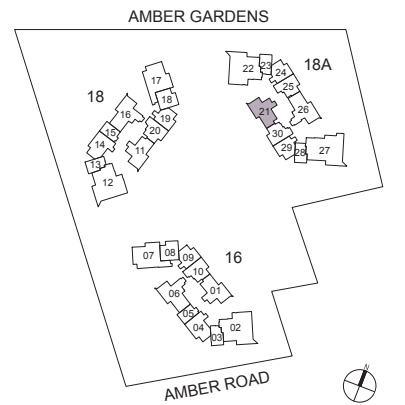
BLK 18A : #02-21 to #21-21



0 1m 2m 5m

Area includes air-con (A/C) ledge, balcony and strata void area where applicable. Please refer to the key plan for orientation. The plans are subject to change as may be approved by relevant authorities. All floor plans are approximate measurements only and are subject to government re-survey. The balcony shall not be enclosed unless with the approved balcony screen.

DB: Distribution Box SC: Shoe Cabinet ST: Storage WIW: Walk-in-Wardrobe / Closet WD: Integrated Washer Dryer  
W&D: Washer and Dryer F: Fridge WC: Water Closet PES: Private Enclosed Space



KEYPLAN IS NOT DRAWN TO SCALE

# 4-BEDROOM

TYPE D1

146 sq m / 1572 sq ft

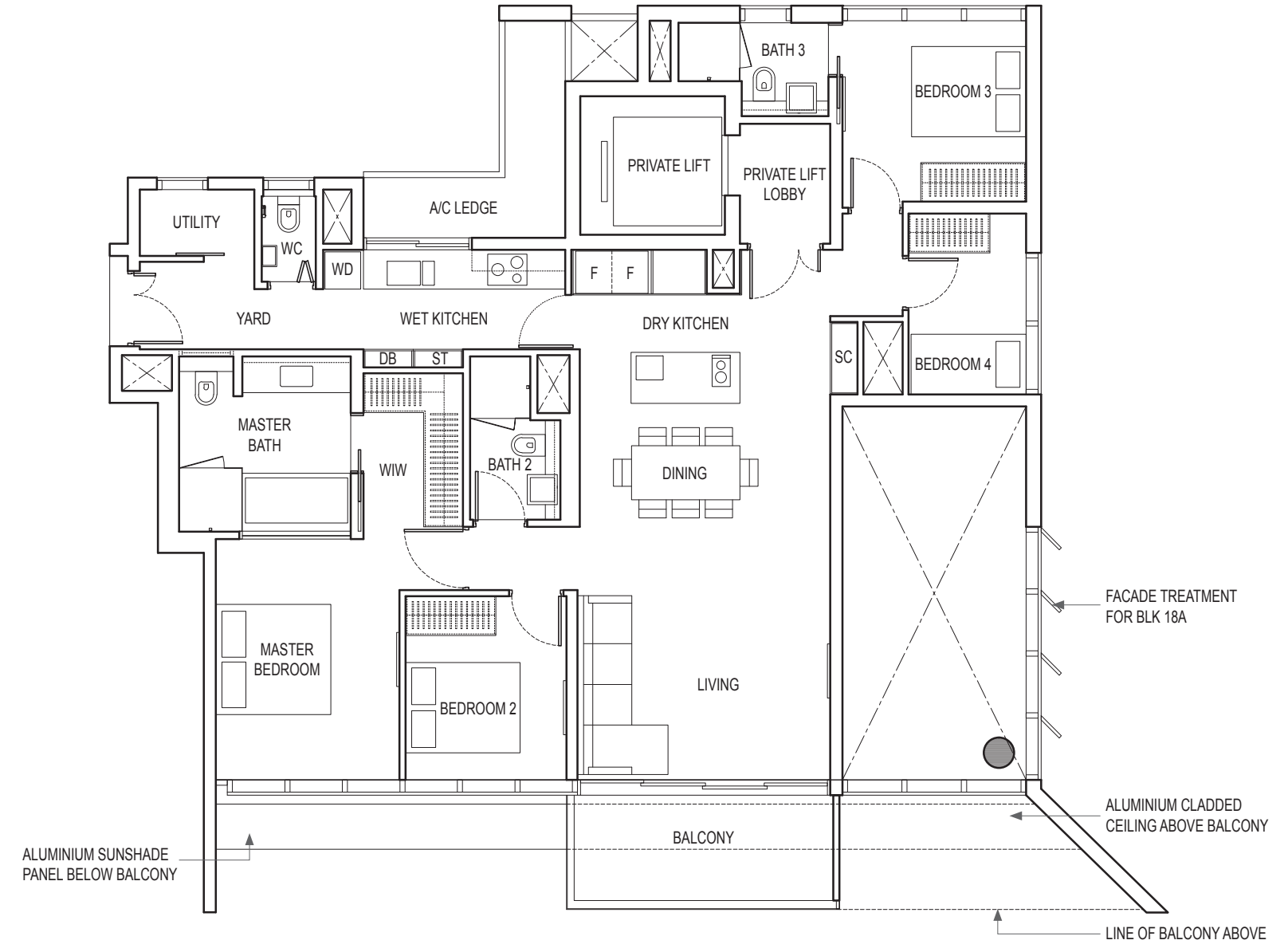
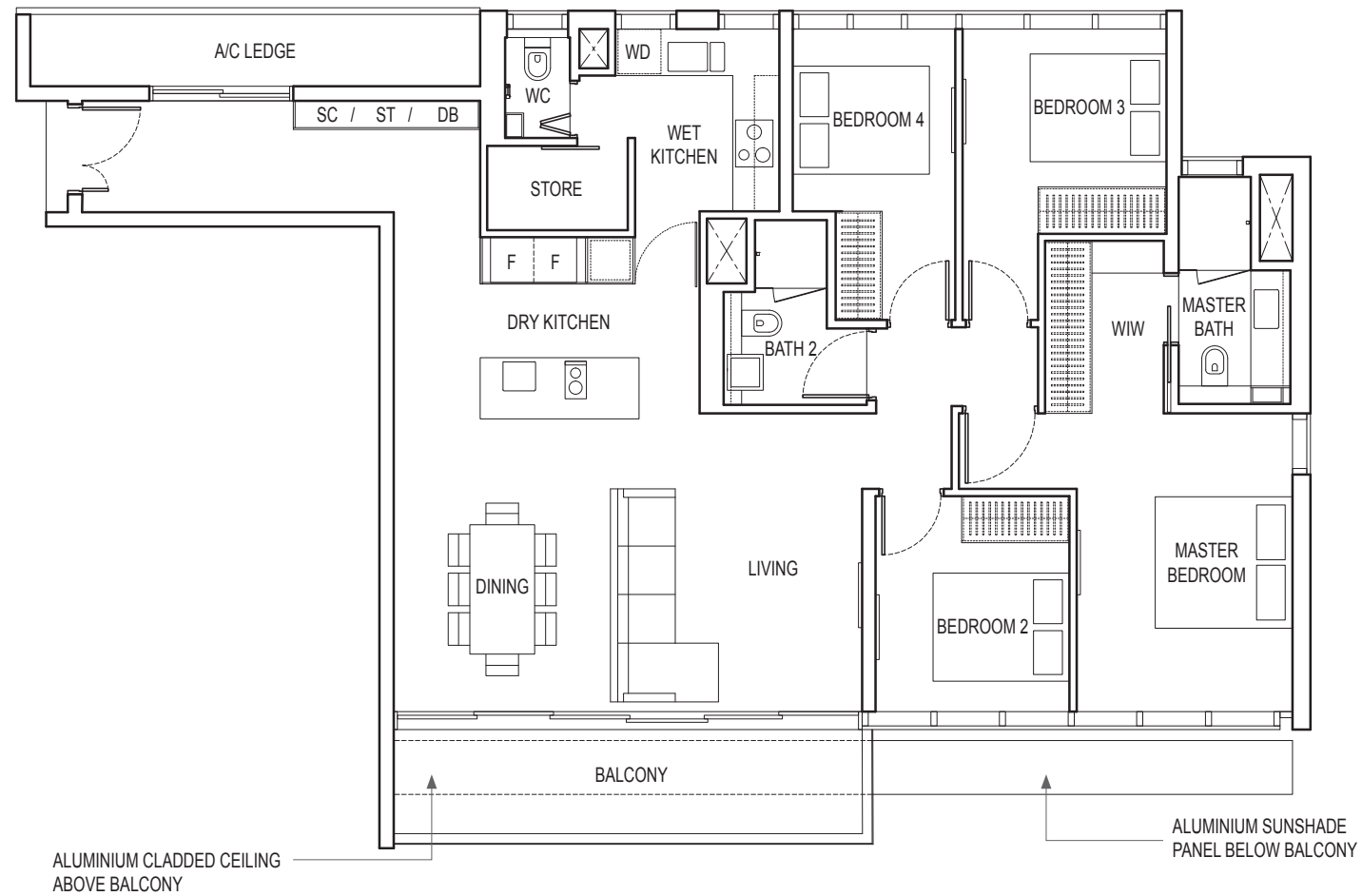
BLK 16 : #03-07 to #21-07  
BLK 18 : #03-17 to #21-17

# 4-BEDROOM PREMIUM

TYPE D2

147 sq m / 1582 sq ft

BLK 16 : #03-02, #05-02, #07-02, #09-02, #11-02, #13-02, #15-02, #17-02, #19-02  
BLK 18 : #03-12, #05-12, #07-12, #09-12, #11-12, #13-12, #15-12, #17-12, #19-12  
BLK 18A : #03-22, #05-22, #07-22, #09-22, #11-22, #13-22, #15-22, #17-22, #19-22



ALUMINIUM CLADED CEILING ABOVE BALCONY

ALUMINIUM SUNSHADE PANEL BELOW BALCONY

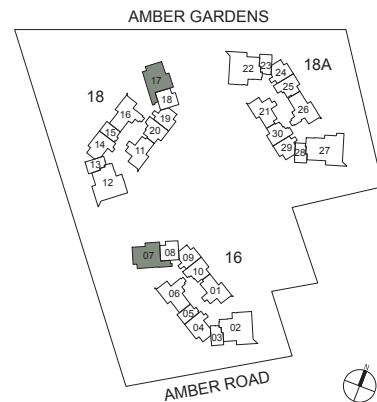
ALUMINIUM SUNSHADE PANEL BELOW BALCONY

FACADE TREATMENT FOR BLK 18A

ALUMINIUM CLADED CEILING ABOVE BALCONY

LINE OF BALCONY ABOVE

0 1m 2m 5m

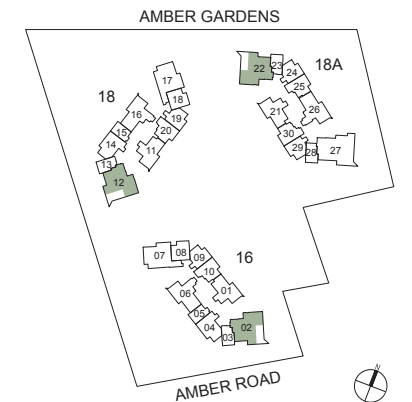


KEYPLAN IS NOT DRAWN TO SCALE

Area includes air-con (A/C) ledge, balcony and strata void area where applicable. Please refer to the key plan for orientation. The plans are subject to change as may be approved by relevant authorities. All floor plans are approximate measurements only and are subject to government re-survey. The balcony shall not be enclosed unless with the approved balcony screen.

DB: Distribution Box SC: Shoe Cabinet ST: Storage WIW: Walk-in-Wardrobe / Closet WD: Integrated Washer Dryer  
W&D: Washer and Dryer F: Fridge WC: Water Closet PES: Private Enclosed Space

0 1m 2m 5m



KEYPLAN IS NOT DRAWN TO SCALE

Area includes air-con (A/C) ledge, balcony and strata void area where applicable. Please refer to the key plan for orientation. The plans are subject to change as may be approved by relevant authorities. All floor plans are approximate measurements only and are subject to government re-survey. The balcony shall not be enclosed unless with the approved balcony screen.

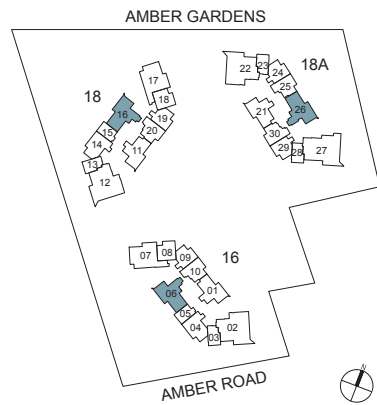
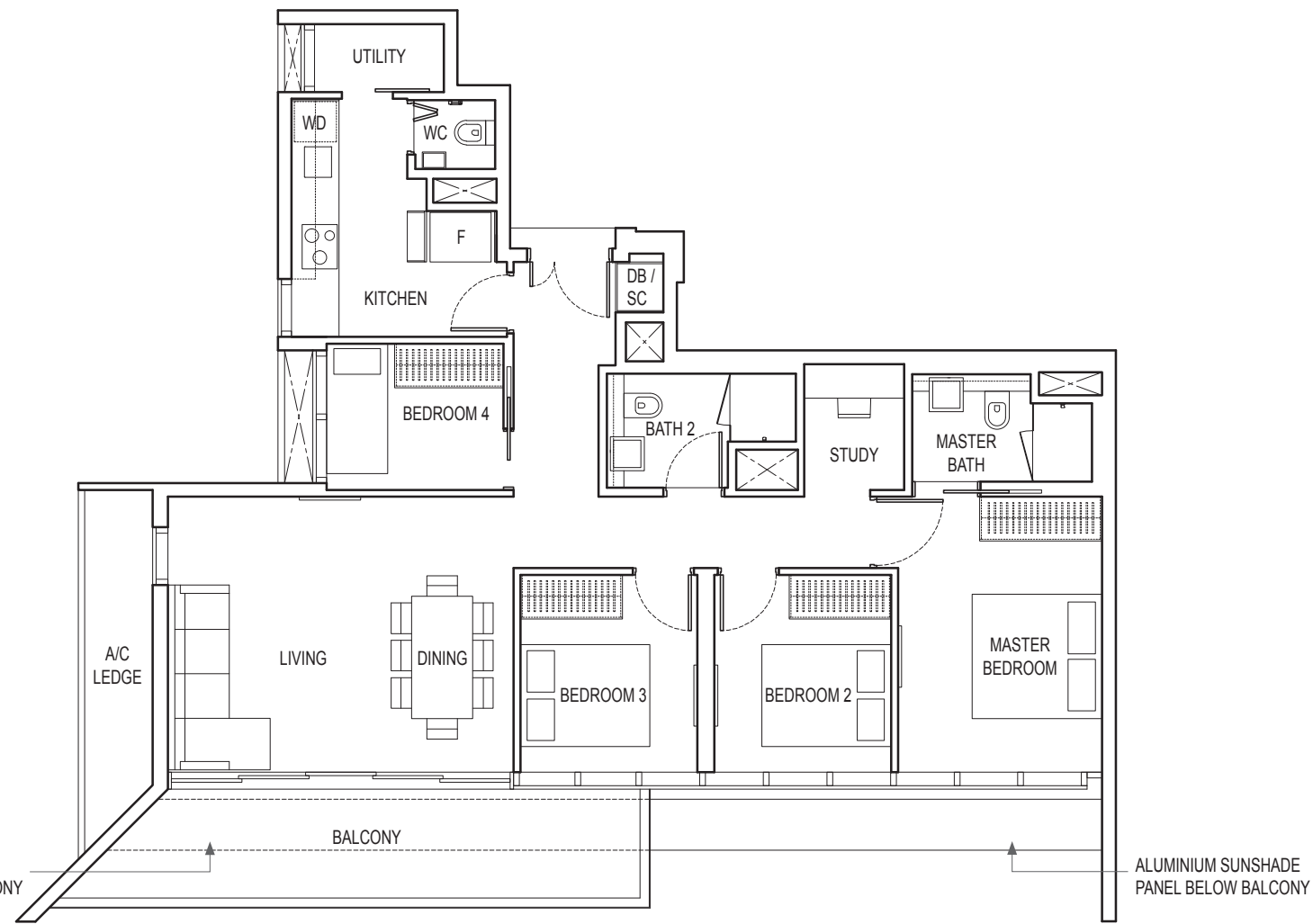
DB: Distribution Box SC: Shoe Cabinet ST: Storage WIW: Walk-in-Wardrobe / Closet WD: Integrated Washer Dryer  
W&D: Washer and Dryer F: Fridge WC: Water Closet PES: Private Enclosed Space

# 4-BEDROOM + STUDY

TYPE D4

121 sq m / 1302 sq ft

BLK 16 : #03-06 to #21-06  
 BLK 18 : #03-16 to #21-16  
 BLK 18A : #03-26 to #21-26



KEYPLAN IS NOT DRAWN TO SCALE

Area includes air-con (A/C) ledge, balcony and strata void area where applicable. Please refer to the key plan for orientation. The plans are subject to change as may be approved by relevant authorities. All floor plans are approximate measurements only and are subject to government re-survey. The balcony shall not be enclosed unless with the approved balcony screen.

DB: Distribution Box SC: Shoe Cabinet ST: Storage WIW: Walk-in-Wardrobe / Closet WD: Integrated Washer Dryer  
 W&D: Washer and Dryer F: Fridge WC: Water Closet PES: Private Enclosed Space

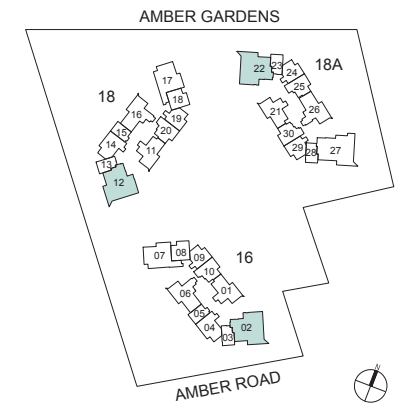
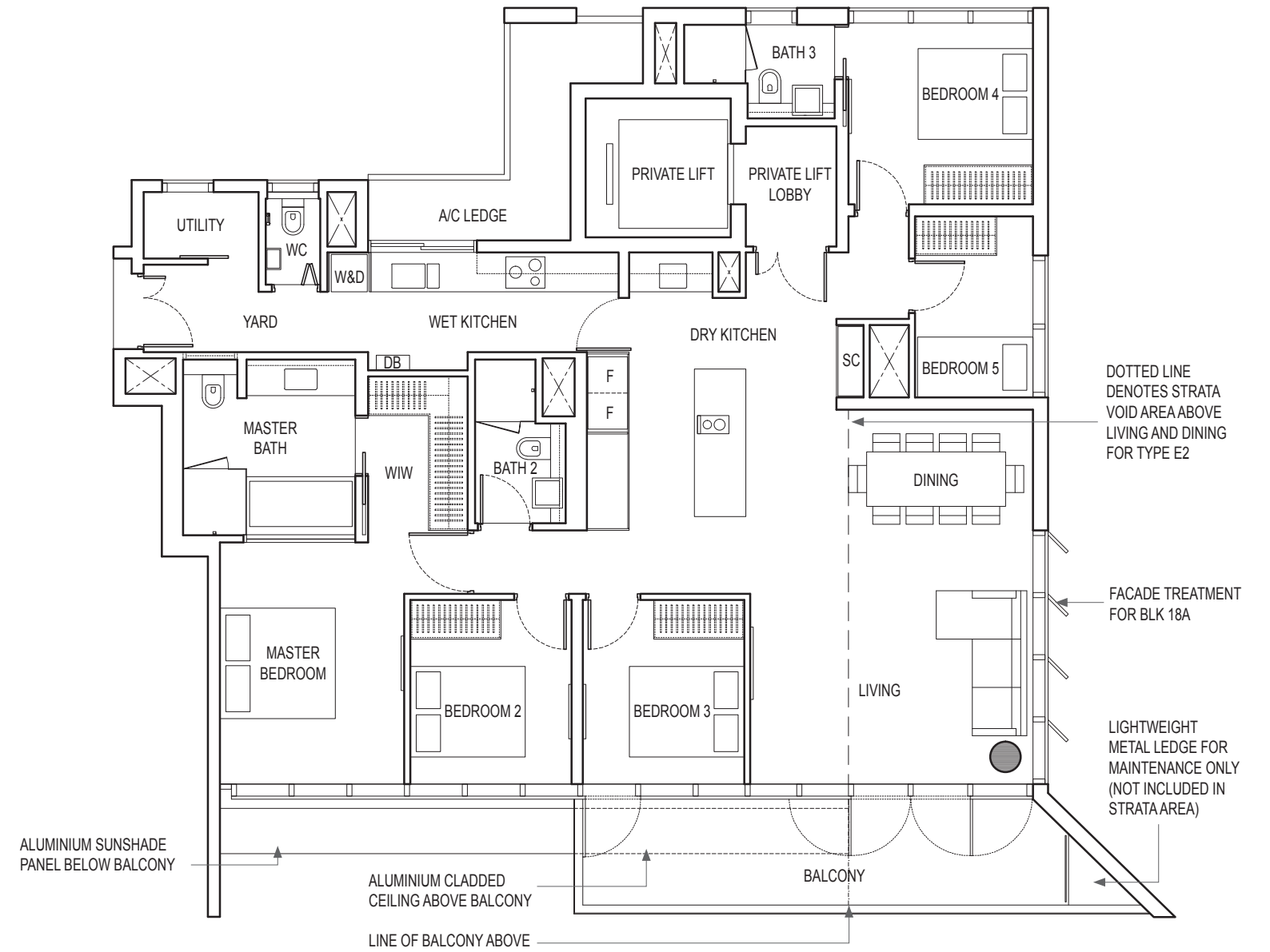
0 1m 2m 5m

# 5-BEDROOM PREMIUM

TYPE E2

199 sq m / 2142 sq ft  
 (Inclusive of strata void area of  
 22 sq m / 237 sq ft above Living and Dining)

BLK 16 : #02-02, #04-02, #06-02, #08-02, #10-02,  
 #12-02, #14-02, #16-02, #18-02  
 BLK 18 : #02-12, #04-12, #06-12, #08-12, #10-12,  
 #12-12, #14-12, #16-12, #18-12  
 BLK 18A : #02-22, #04-22, #06-22, #08-22, #10-22,  
 #12-22, #14-22, #16-22, #18-22



KEYPLAN IS NOT DRAWN TO SCALE

Area includes air-con (A/C) ledge, balcony and strata void area where applicable. Please refer to the key plan for orientation. The plans are subject to change as may be approved by relevant authorities. All floor plans are approximate measurements only and are subject to government re-survey. The balcony shall not be enclosed unless with the approved balcony screen.

DB: Distribution Box SC: Shoe Cabinet ST: Storage WIW: Walk-in-Wardrobe / Closet WD: Integrated Washer Dryer  
 W&D: Washer and Dryer F: Fridge WC: Water Closet PES: Private Enclosed Space

0 1m 2m 5m

DOTTED LINE DENOTES STRATA VOID AREA ABOVE LIVING AND DINING FOR TYPE E2

FACADE TREATMENT FOR BLK 18A

LIGHTWEIGHT METAL LEDGE FOR MAINTENANCE ONLY (NOT INCLUDED IN STRATA AREA)

ALUMINIUM CLADDED CEILING ABOVE BALCONY

LINE OF BALCONY ABOVE

ALUMINIUM SUNSHADE PANEL BELOW BALCONY

ALUMINIUM SUNSHADE PANEL BELOW BALCONY